

Unexpected diversity in socially synchronized rhythms of shorebirds

Martin Bulla¹, Mihai Valcu¹, Adriaan M. Dokter², Alexei G. Dondua³, András Kosztolányi^{4,5}, Anne L. Rutten^{1,6}, Barbara Helm⁷, Brett K. Sandercock⁸, Bruce Casler⁹, Bruno J. Ens¹⁰, Caleb S. Spiegel¹¹, Chris J. Hassell¹², Clemens Küpper¹³, Clive Minton¹⁴, Daniel Burgas^{15,16}, David B. Lank¹⁷, David C. Payer¹⁸, Egor Y. Loktionov¹⁹, Erica Nol²⁰, Eunbi Kwon²¹, Fletcher Smith²², H. River Gates^{23,24,25}, Hana Vítnerová²⁶, Hanna Prüter²⁷, James A. Johnson²⁴, James J. H. St Clair^{28,29}, Jean-François Lamarre³⁰, Jennie Rausch³¹, Jeroen Reneerkens³², Jesse R. Conklin³², Joanna Burger³³, Joe Liebezeit³⁴, Joël Bêty³⁰, Jonathan T. Coleman³⁵, Jordi Figuerola³⁶, Jos C. E. W. Hooijmeijer³², José A. Alves^{37,38}, Joseph A. M. Smith³⁹, Karel Weidinger⁴⁰, Kari Koivula⁴¹, Ken Gosbell⁴², Klaus-Michael Exo⁴³, Larry Niles⁴⁴, Laura Koloski⁴⁵, Laura McKinnon⁴⁶, Libor Praus⁴⁰, Marcel Klaassen⁴⁷, Marie-Andrée Giroux^{48,49}, Martin Sládeček⁵⁰, Megan L. Boldenow⁵¹, Michael I. Goldstein⁵², Miroslav Šálek⁵⁰, Nathan Senner^{32,53}, Nelli Rönkä⁴¹, Nicolas Lecomte⁴⁹, Olivier Gilg^{54,55}, Orsolya Vincze^{5,56}, Oscar W. Johnson⁵⁷, Paul A. Smith⁵⁸, Paul F. Woodard³¹, Pavel S. Tomkovich⁵⁹, Phil F. Battley⁶⁰, Rebecca Bentzen⁶¹, Richard B. Lanctot²⁴, Ron Porter⁶², Sarah T. Saalfeld²⁴, Scott Freeman⁶³, Stephen C. Brown²⁵, Stephen Yezerinac⁶⁴, Tamás Székely⁶⁵, Tomás Montalvo⁶⁶, Theunis Piersma^{32,67}, Vanessa Loveri⁶⁸, Veli-Matti Pakanen⁴¹, Wim Tjisen⁶⁹ & Bart Kempnaers¹

The behavioural rhythms of organisms are thought to be under strong selection, influenced by the rhythmicity of the environment^{1–4}. Such behavioural rhythms are well studied in isolated individuals under laboratory conditions^{1,5}, but free-living individuals have to temporally synchronize their activities with those of others, including potential mates, competitors, prey and predators^{6–10}. Individuals can temporally segregate their daily activities (for example, prey avoiding predators, subordinates avoiding dominants) or synchronize their activities (for example, group foraging, communal defence, pairs reproducing or caring for offspring)^{6–9,11}. The behavioural rhythms that emerge from such social synchronization and the underlying evolutionary and ecological drivers that shape them remain poorly understood^{15–7,9}. Here we investigate these rhythms in the context of biparental care, a particularly sensitive phase of social synchronization¹² where pair members potentially compromise their individual rhythms. Using data from 729 nests of 91 populations of 32 biparentally incubating shorebird species, where parents synchronize to achieve continuous coverage of developing eggs, we report remarkable within- and between-species diversity in incubation rhythms. Between species, the median length of one parent's incubation bout varied from 1–19 h, whereas period length—the time in which a parent's probability to incubate cycles once between its highest and lowest value—varied from 6–43 h. The length of incubation bouts was unrelated to variables reflecting energetic demands, but species relying on crypsis (the ability to avoid detection by other animals) had longer incubation bouts than those that are readily visible or who actively protect their nest against predators. Rhythms entrainable to the 24-h light–dark cycle were less prevalent at high latitudes and absent in 18 species. Our results indicate that even under similar environmental conditions and despite 24-h environmental cues, social synchronization can generate far more diverse behavioural rhythms than expected from studies of individuals in captivity^{5–7,9}. The risk of predation, not the risk of starvation, may be a key factor underlying the diversity in these rhythms.

Incubation by both parents prevails in almost 80% of non-passerine families¹³ and is the most common form of care in shorebirds¹⁴. Biparental shorebirds are typically monogamous¹⁵, most species lay three or four eggs in an open nest on the ground¹⁵ and cover their eggs almost continuously¹³. Pairs achieve this through synchronization of

their activities so that one of them is responsible for the nest at a given time (an incubation bout). Alternating female and male bouts generate an incubation rhythm with a specific period length (cycle of high and low probability for a parent to incubate).

We used diverse monitoring systems (Methods and Extended Data Table 1) to collect data on incubation rhythms from 91 populations of 32 shorebird species belonging to 10 genera (Fig. 1a), extracted the length of 34,225 incubation bouts from 729 nests and determined the period length for pairs in 584 nests (see Methods, Extended Data Figs 1, 2).

We found vast between- and within-species variation in incubation bout length and in period length (Figs 1–3 and Extended Data Fig. 3). Different species, but also different pairs of the same species, adopted notably different incubation rhythms, even when breeding in the same area (see, for example, incubation rhythms in Barrow, Alaska, represented by '1' in Fig. 1b, c; incubation rhythms for each nest can be found in the supplementary actograms of ref. 16). In some pairs, parents exchanged incubation duties about 20 times a day (Fig. 2a; for example *Charadrius semipalmatus*, Fig. 1b), whereas in others a single parent regularly incubated for 24 h (Fig. 2a; for example *Limnodromus scolopaceus*, Fig. 1b), with exceptional bouts of up to 50 h (supplementary actograms of ref. 16). Similarly, incubation rhythms of pairs in 22% of nests followed a strict 24-h period (Fig. 2b; for example *Tringa flavipes*, Fig. 1b), whereas the rhythms of others deviated markedly from a 24-h period (Fig. 2b) resulting in ultradian (<20 h in 12% of nests; for example *Numenius phaeopus*; Fig. 1b), free-running-like (for example *Calidris alpina*; Fig. 1b) and infradian rhythms (>28 h in 8% of nests), with some having period lengths up to 48 h (for example *Limnodromus scolopaceus*; Fig. 1b). This variation in period length partly related to the variation in bout length (Fig. 3). In the suborder Scolopaci, period length correlated positively with median bout length, but in the suborder Charadrii species with 24-h periods had various bout lengths, and species with similar bout lengths had different period lengths.

Despite substantial within-species variation, we found a strong evolutionary signal for both bout and period length with a coefficient of phylogenetic signal λ close to 1 (Extended Data Table 2). This is consistent with the notion that biological rhythms are largely genetically determined and conserved among related species^{8–10}. However, the phylogenetic effect seems unevenly distributed over the taxonomic level. Suborder explained 33% of the phenotypic variance in both bout

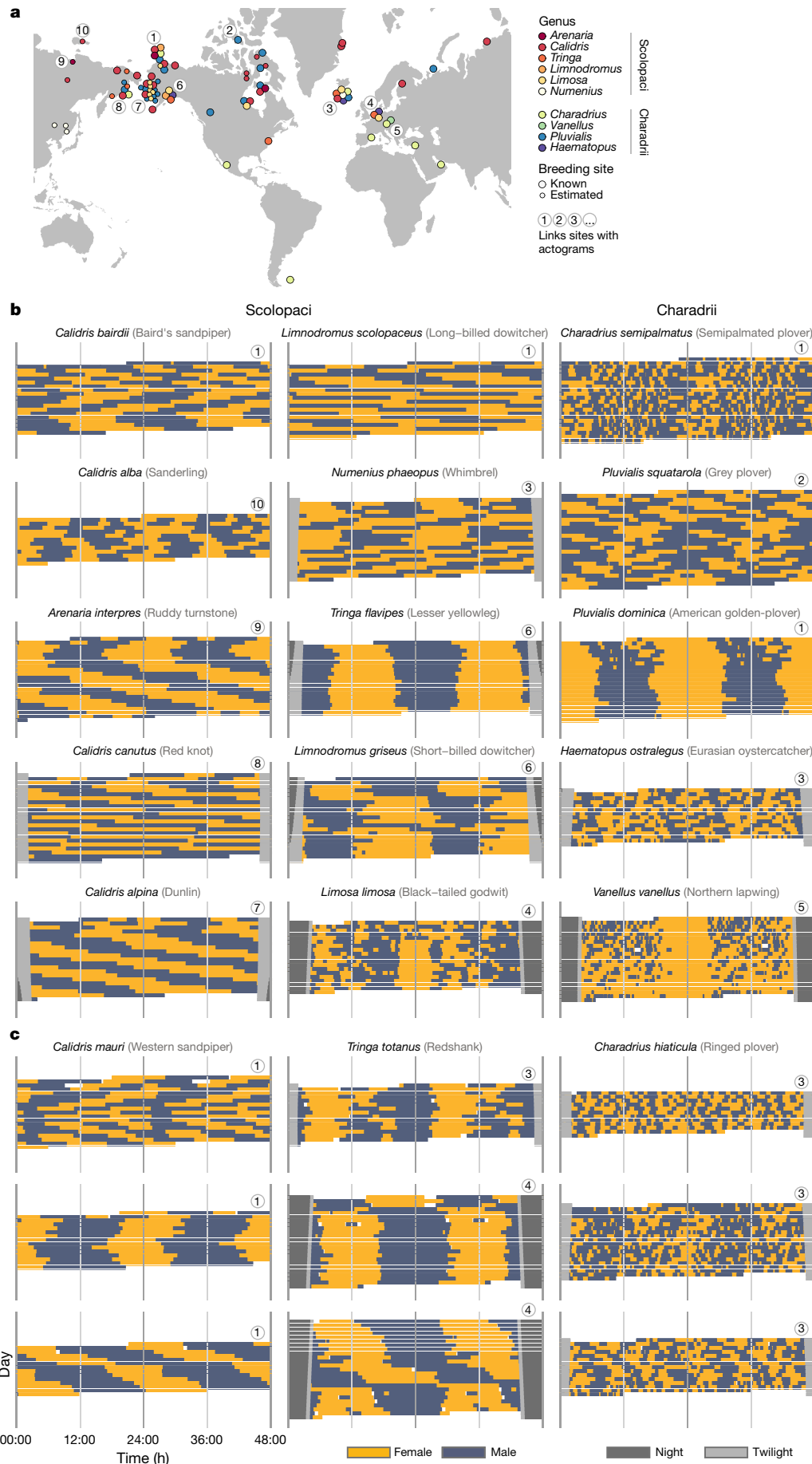


Figure 1 | Map of studied breeding sites and the diversity of shorebird incubation rhythms. **a**, Map of breeding sites with data on incubation rhythms. The colour of the dots indicates the genus (data from multiple species per genus may be available), the size of the dots refers to data quality (large dots, exact breeding site known; small dots, breeding site estimated; see Methods). For nearby or overlapping locations, the dots are scattered to increase visibility. Contours of the map were made with Natural Earth, <http://www.naturalearthdata.com>.

b, c, Illustrations of between-species diversity (**b**) and within-species diversity (**c**; note that the three rhythms for *Calidris mauri* and *Calidris hiaticula* come from the same breeding location). Each actogram depicts the bouts of female (yellow) and male (blue) incubation at a single nest over a 24-h period, plotted twice, so that each row represents two consecutive days. If present, twilight is indicated by light grey bars and corresponds to the time when the sun is between 6° and 0° below the horizon, night is indicated by dark grey bars and corresponds to the time when the sun is $>6^\circ$ below the horizon. Twilight and night are omitted in the centre of the actogram (24:00) to make the incubation rhythm visible. The circled numbers (1–10) indicate the breeding site of each pair and correspond to the circled numbers on the map in **a**.

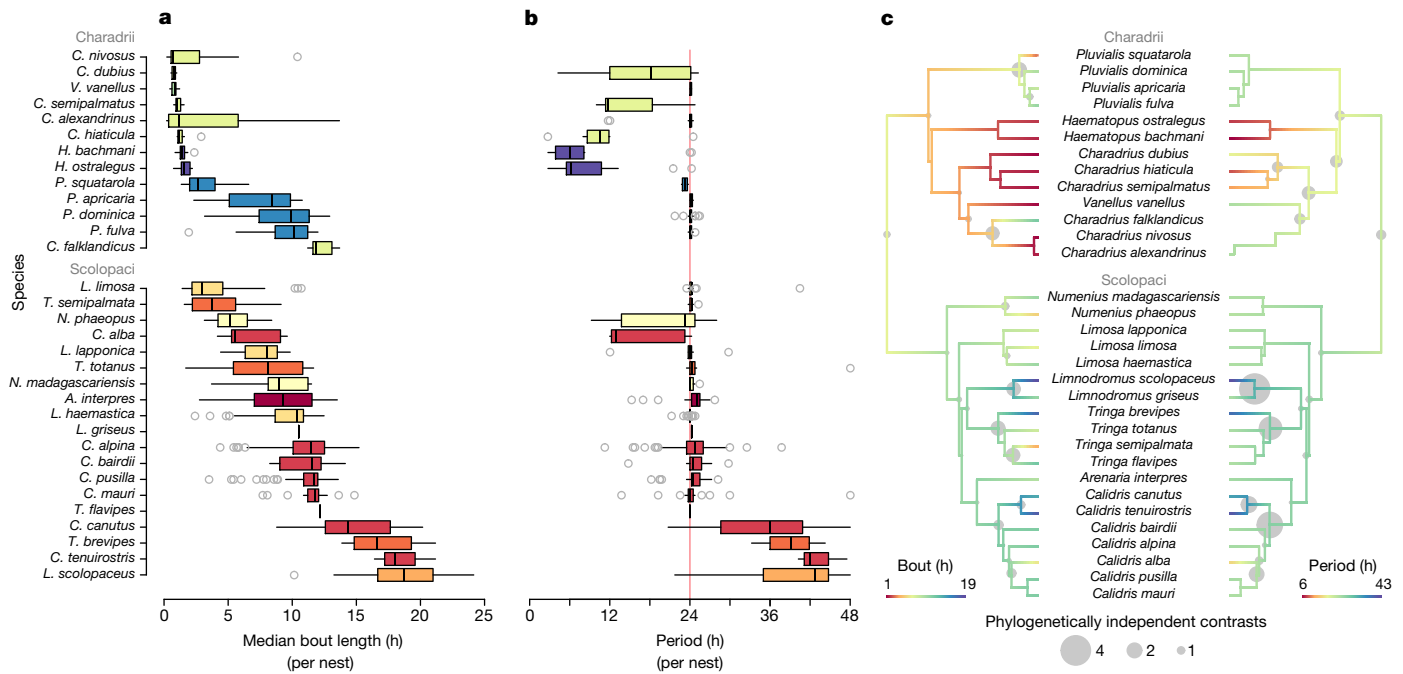


Figure 2 | Variation in incubation rhythms and its estimated evolution. **a, b**, Box plots are ordered by species (within suborder) from the shortest to the longest median bout length, and depict the genus (colour as in Fig. 1a), median (vertical line inside the box), 25–75th percentiles (box) 25th and 75th percentiles minus or plus 1.5× interquartile range, respectively, or the minimum and maximum value, whichever is smaller (box) outliers (circles). $n_{\text{median bout length}} = 729$ and $n_{\text{period}} = 584$

nests. **b**, The red vertical line indicates a 24-h period. **c**, Observed and reconstructed incubation bout and period length visualized (by colour) on the phylogenetic tree²⁹ using medians of each species (based on medians of each population) and 1 out of 100 sampled trees (see Methods). The grey circles represent phylogenetically independent contrasts³⁰ and hence emphasize the differences at each tree node.

and period length, with the Scolopaci having longer incubation bouts and periods than the Charadrii (Extended Data Table 3 and Figs 2, 3). Species explained 41% of the phenotypic variation in bout length and 46% in period length, but genus explained little (<1% in both bout and period length; Extended Data Table 3), suggesting that despite a strong phylogenetic signal, these traits can rapidly diverge (Fig. 2c).

Two ecological factors may explain the observed variation in bout length. First, the ‘energetic demands hypothesis’ stipulates that the length of an incubation bout depends on the energetic state of the bird^{13,17}. This predicts that large species will have longer incubation bouts than smaller species, because they radiate less body heat per unit of mass and that incubation bouts will shorten with increasing breeding latitude, because—everything else being equal—energy

stores will deplete faster in colder environments (Extended Data Fig. 4a, b shows latitudinal cline in summer temperatures). However, bout length was unrelated to body size (Fig. 4a) and correlated positively (instead of negatively) with latitude (Fig. 4b). These correlational results across populations and species support recent experimental findings within species¹⁸ and suggest that in biparentally incubating shorebirds energetic demands are not an important ecological driver underlying variation in bout length.

An alternative explanation for variation in the length of incubation bouts relates to anti-predation strategies. Those species that rely primarily on parental crypsis (Extended Data Fig. 5a) benefit from reduced activity near the nest, because such activity can reveal the location of the nest to potential predators^{19,20}. Thus, in these species, selection will favour fewer change-overs at the nest and therefore longer incubation bouts. By contrast, species that are clearly visible when sitting on the nest or that rely on active anti-predation behaviour (Extended Data Fig. 5b), including having a partner on the watch for predators, leaving the nest long before the predator is nearby and attacking or distracting the predator¹⁵, obtain no advantage from minimizing activity. For these species, bout length can shorten, which may be advantageous for other reasons (for example, reduced need to store fat). We quantified anti-predation strategy as the distance at which the incubating parent left the nest when approached by a human (escape distance), because cryptic species stay on the nest longer (often until nearly stepped upon)¹⁵. Despite the large geographical distribution of the studied species, with related variability in the suite of predators and predation pressure²¹, and even when controlling for phylogeny (which captures much of the variation in anti-predation strategy, Extended Data Fig. 6), escape distance negatively correlated with the length of incubation bouts (Fig. 4c). This result suggests that bout length co-evolved with the anti-predation strategy.

Under natural conditions, most organisms show 24-h rhythmicity, but during the summer, when most shorebirds breed, the 24-h variation in light decreases with latitude leading to continuous polar daylight

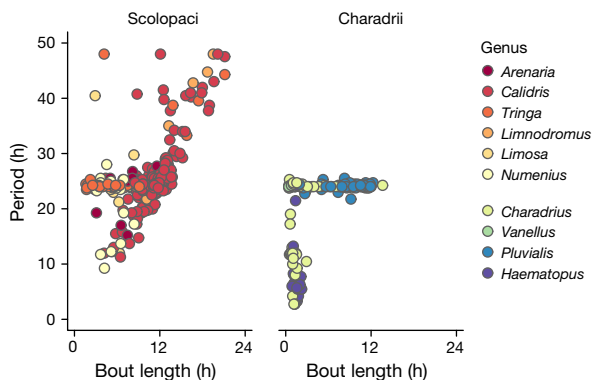


Figure 3 | Relationship between bout and period length. Each dot represents a single nest ($n = 584$ nests), colours depict the genus. In the suborder Scolopaci the median bout length and period length correlate positively ($r_{\text{Spearman}} = 0.56$, $n = 424$ nests); in the suborder Charadrii, periods longer than approximately 24 h are absent, and there is no simple relationship between bout and period length ($n = 160$ nests). For species-specific relationships see Extended Data Fig. 3.

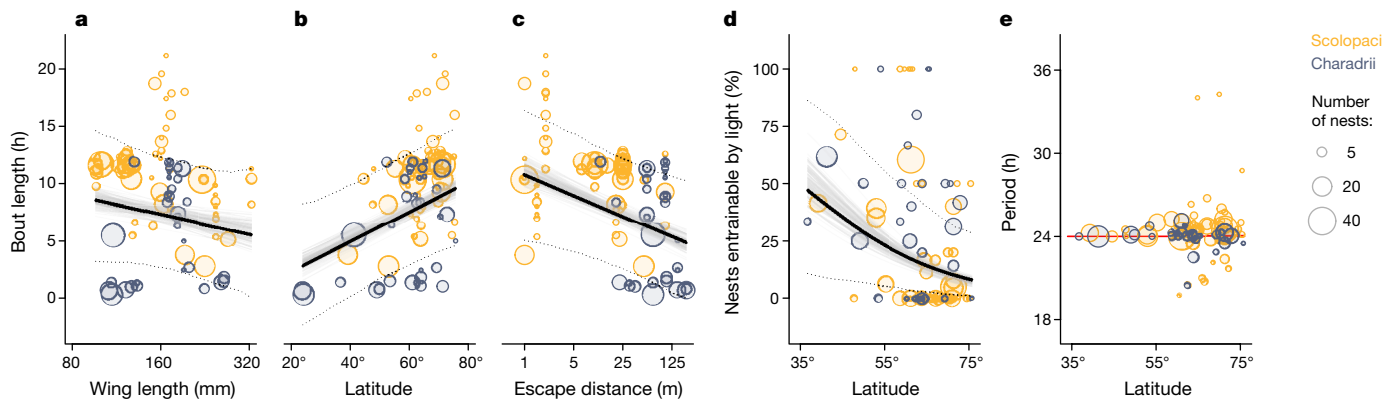


Figure 4 | Predictors of variation in incubation rhythms.

a–c, Relationships between bout length and body size, measured as female wing length (**a**), breeding latitude (**b**) and anti-predation strategy, quantified as escape distance (**c**) for $n = 729$ nests from 91 populations belonging to 32 species. **d**, The relationship between the proportion of nests with a period length that is entrainable by the 24-h light–dark cycle (that is, period lengths: 3, 6, 12, 24, or 48 h) and breeding latitude ($n = 584$ nests from 88 populations belonging to 30 species). **e**, The distribution of period length over latitude. The period was standardized to 24 h so that all 24-h harmonics are depicted as 24 h (red line) and respective deviations from each harmonic as deviations from 24 h (for example, a period of 12.5 h is depicted as 25 h). **a–e**, Each circle represents the population

in the northern-most breeding grounds²² (Extended Data Fig. 4c, d). Such reduced variation in 24-h light intensity may cause a loss of 24-h rhythmicity^{23–25}. As a consequence, circadian behavioural rhythms should exhibit a latitudinal cline²². As predicted, incubation rhythms with periods that do not follow the 24-h light–dark cycle, such as free-running-like patterns (left column in Fig. 1b), occurred more often in shorebirds breeding at higher latitudes (Fig. 4d). The absolute deviations of periods from 24 h and 24-h harmonics also increased with latitude (Fig. 4e and Extended Data Table 4). Although this supports the existence of a latitudinal cline in socially emerged behavioural rhythms²², we found a substantial number of rhythms that defy the 24-h day even at low and middle latitudes (Fig. 4d–e).

Many shorebirds predominantly use tidal habitats, at least away from their breeding ground¹⁵. To anticipate tidal foraging opportunities, these species may have activity patterns with a period length resembling the tidal period. Because changing to a different rhythm is costly²⁶, these tidal activity patterns might carry over to incubation. Although half of our species are tidal away from their breeding grounds, and some forage in tidal areas also during breeding (approximately 12% of populations), in only 5% of nests did pairs display a period length that can be entrained by the tide. Moreover, tidal species had period lengths similar to, not longer than, non-tidal ones (Extended Data Table 4). Hence, unlike the 24-h light–dark cycle, tidal life-history seems to play at best a negligible role in determining incubation rhythms.

Three main questions arise from our results. First, is variation in incubation bout length in cryptic species related to the actual predation pressure? This can be tested by comparing bout length between populations of a particular species that are exposed to different predator densities, or between years that differ in predation pressure. Second, it remains unclear how the diverse social rhythms emerge. Are these rhythms a consequence of behavioural flexibility, or a ‘fixed’ outcome of synchronization between the circadian clocks of the two individuals involved? An experimental study on ring doves (*Streptopelia risoria*) suggests that parents may even use two timers—circadian oscillation and interval timing—to determine when to incubate²⁷. Parents rapidly adjusted their schedules to phase-shifted photoperiods and their incubation rhythm ‘ran free’ in constant dim illumination (implying a circadian mechanism), whereas an experimental delay in the onset of an incubation bout did not change the length of the bout because the incubating parent refused to leave the nest until its incubation bout reached the ‘typical’ duration

(implying interval timing). Third, what are the fitness consequences for the parents of having a certain incubation rhythm? For example, the costs of having a particular incubation rhythm may be unevenly distributed between the two parents (for instance, because one parent is on incubation duty when food is more readily available, or because one parent ‘enforces’ its own rhythm at a cost to the other parent). In conclusion, our results reveal that under natural conditions social synchronization can generate much more diverse rhythms than expected from previous work^{5–7,9,28}, and that these rhythms often defy the assumption of entrainment to the 24-h day–night cycle. Risk of predation, rather than risk of starvation, seems to have a key role in determining some of the variation in incubation rhythms. We describe this diversity in the context of biparental incubation, but diverse behavioural rhythms may also arise in many other social settings (for example, in the context of mating interactions²⁵ or vigilance behaviour during group foraging). Essentially, the reported diversity suggests that the expectation that individuals within a pair (or group) should optimize their behavioural rhythms relative to the 24-h day may be too simplistic, encouraging further study of the evolutionary ecology of plasticity in circadian clocks.

Online Content Methods, along with any additional Extended Data display items and Source Data, are available in the online version of the paper; references unique to these sections appear only in the online paper.

Received 7 June; accepted 21 October 2016.

Published online 23 November 2016.

- Dunlap, J. C., Loros, J. J. & DeCoursey, P. J. *Chronobiology: Biological Timekeeping* (Sinauer Associates, 2004).
- Young, M. W. & Kay, S. A. Time zones: a comparative genetics of circadian clocks. *Nat. Rev. Genet.* **2**, 702–715 (2001).
- Helm, B. & Visser, M. E. Heritable circadian period length in a wild bird population. *Proc. R. Soc. B* **277**, 3335–3342 (2010).
- Koskenvuo, M., Hublin, C., Partinen, M., Heikkilä, K. & Kaprio, J. Heritability of diurnal type: a nationwide study of 8753 adult twin pairs. *J. Sleep Res.* **16**, 156–162 (2007).
- Kronfeld-Schor, N., Bloch, G. & Schwartz, W. J. Animal clocks: when science meets nature. *Proc. R. Soc. B* **280**, 20131354 (2013).
- Bloch, G., Herzog, E. D., Levine, J. D. & Schwartz, W. J. Socially synchronized circadian oscillators. *Proc. R. Soc. B* **280**, 20130035 (2013).
- Castillo-Ruiz, A., Paul, M. J. & Schwartz, W. J. In search of a temporal niche: social interactions. *Prog. Brain Res.* **199**, 267–280 (2012).
- Mistlberger, R. E. & Skene, D. J. Social influences on mammalian circadian rhythms: animal and human studies. *Biol. Rev. Camb. Philos. Soc.* **79**, 533–556 (2004).

9. Davidson, A. J. & Menaker, M. Birds of a feather clock together—sometimes: social synchronization of circadian rhythms. *Curr. Opin. Neurobiol.* **13**, 765–769 (2003).
10. Mrosovsky, N. Locomotor activity and non-photic influences on circadian clocks. *Biol. Rev. Camb. Philos. Soc.* **71**, 343–372 (1996).
11. Regal, P. J. & Connolly, M. S. Social influences on biological rhythms. *Behaviour* **72**, 171–198 (1980).
12. Emlen, S. T. & Oring, L. W. Ecology, sexual selection, and the evolution of mating systems. *Science* **197**, 215–223 (1977).
13. Deeming, D. C. *Avian Incubation: Behaviour, Environment and Evolution* (Oxford Univ. Press, 2002).
14. Szekely, T. & Reynolds, J. D. Evolutionary transitions in parental care in shorebirds. *Proc. R. Soc. B* **262**, 57–64 (1995).
15. del Hoyo, J., Elliott, A. & Sargatal, J. *Handbook of the Birds of the World. Vol. 3. Hoatzin to Auks*. (Lynx Edicions, 1996).
16. Bulla, M. *et al.* Supporting Information for 'Unexpected diversity in socially synchronized rhythms of shorebirds'. *Open Science Framework* <http://doi.org/10.17605/OSF.IO/WXUFM> (2016).
17. Williams, J. B. in *Avian Energetics and Nutritional Ecology* (ed. C. Carey) Ch. 5, 375–416 (Chapman & Hall, 1996).
18. Bulla, M., Cresswell, W., Rutten, A. L., Valcu, M. & Kempenaers, B. Biparental incubation-scheduling: no experimental evidence for major energetic constraints. *Behav. Ecol.* **26**, 30–37 (2015).
19. Martin, T. E., Scott, J. & Menge, C. Nest predation increases with parental activity: separating nest site and parental activity effects. *Proc. R. Soc. B* **267**, 2287–2293 (2000).
20. Smith, P. A., Tulp, I., Schekkerman, H., Gilchrist, H. G. & Forbes, M. R. Shorebird incubation behaviour and its influence on the risk of nest predation. *Anim. Behav.* **84**, 835–842 (2012).
21. McKinnon, L. *et al.* Lower predation risk for migratory birds at high latitudes. *Science* **327**, 326–327 (2010).
22. Hut, R. A., Paolucci, S., Dor, R., Kyriacou, C. P. & Daan, S. Latitudinal clines: an evolutionary view on biological rhythms. *Proc. R. Soc. B* **280**, 20130433 (2013).
23. van Oort, B. E. *et al.* Circadian organization in reindeer. *Nature* **438**, 1095–1096 (2005).
24. Steiger, S. S. *et al.* When the sun never sets: diverse activity rhythms under continuous daylight in free-living arctic-breeding birds. *Proc. R. Soc. B* **280**, 20131016 (2013).
25. Lesku, J. A. *et al.* Adaptive sleep loss in polygynous pectoral sandpipers. *Science* **337**, 1654–1658 (2012).
26. Foster, R. G. & Wulff, K. The rhythm of rest and excess. *Nat. Rev. Neurosci.* **6**, 407–414 (2005).
27. Silver, R. & Bittman, E. L. Reproductive mechanisms: interaction of circadian and interval timing. *Ann. NY Acad. Sci.* **423**, 488–514 (1984).
28. Paul, M. J., Indic, P. & Schwartz, W. J. Social synchronization of circadian rhythmicity in female mice depends on the number of cohabiting animals. *Biol. Lett.* **11**, 20150204 (2015).
29. Revell, L. J. Two new graphical methods for mapping trait evolution on phylogenies. *Methods Ecol. Evol.* **4**, 754–759 (2013).
30. Felsenstein, J. Phylogenies and the comparative method. *Am. Nat.* **125**, 1–15 (1985).

Acknowledgements We thank all that made the data collection possible. We are grateful to W. Schwartz, E. Schlicht, W. Forstmeier, M. Baldwin, H. Fried Petersen, D. Starr-Glass and B. Bulla for comments on the manuscript and to F. Korner-Nievergelt, J. D. Hadfield, L. Z. Garamszegi, S. Nakagawa, T. Roth, N. Dochtermann, Y. Araya, E. Miller and H. Schielzeth for advice on data analysis. Data collection was supported by various institutions and people listed in supplementary data 1 at <https://osf.io/sq8gk> (ref. 16). The study was supported by the Max Planck Society (to B.K.). M.B. is a PhD student in the International Max Planck Research School for Organismal Biology.

Author Contributions M.B. and B.K. conceived the study. All authors except B.H. collected the primary data (see <https://osf.io/sq8gk>, ref. 16). M.B. coordinated the study and managed the data. M.B. and M.V. developed the methods to extract incubation. M.B. extracted bout lengths and with help from A.R. and M.V. created actograms. M.B. analysed the data with help from M.V. M.B. prepared the supporting information. M.B. and B.K. wrote the paper with input from the other authors. Except for the first, second and last author, the authors are listed alphabetically by their first name.

Author Information Reprints and permissions information is available at www.nature.com/reprints. The authors declare no competing financial interests. Readers are welcome to comment on the online version of the paper. Correspondence and requests for materials should be addressed to M.B. (bulla.mar@gmail.com) and B.K. (b.kempenaers@orn.mpg.de).

Reviewer Information *Nature* thanks P. Bartell, C. Buck and M. Visser for their contribution to the peer review of this work.

¹Department of Behavioural Ecology and Evolutionary Genetics, Max Planck Institute for Ornithology, Eberhard Gwinner Str, Seewiesen 82319, Germany. ²Computational Geo-Ecology, Institute for Biodiversity and Ecosystem Dynamics, University of Amsterdam, Science Park 904, Amsterdam 1098 XH, The Netherlands. ³Gatchinskaya, apartment 27, Saint Petersburg 197198, Russia. ⁴Department of Ecology, University of Veterinary Medicine Budapest, Rottenbiller u. 50, Budapest H-1077, Hungary. ⁵MTA-DE 'Lendület' Behavioural Ecology

Research Group, Department of Evolutionary Zoology, University of Debrecen, Egyetem tér 1, Debrecen H-4032, Hungary. ⁶Apiloo GmbH, Starnberg 82319, Germany. ⁷Institute of Biodiversity, Animal Health and Comparative Medicine, University of Glasgow, Graham Kerr Building, Glasgow G12 8QQ, UK. ⁸Division of Biology, Kansas State University, 116 Ackert Hall, Manhattan, Kansas 66506-4901, USA. ⁹PO Box 1094, Fallon, Nevada 89407, USA. ¹⁰Coastal Ecology Team, Sovon Dutch Centre for Field Ornithology, PO Box 59, Den Burg 1790 AB, Texel, The Netherlands. ¹¹Division of Migratory Birds, Northeast Region, US Fish and Wildlife Service, 300 Westgate Center Dr, Hadley, Massachusetts 01035, USA. ¹²Global Flyway Network, PO Box 3089, Broome, Western Australia 6725, Australia. ¹³Institute of Zoology, University of Graz, Universitätsplatz 2, 8010 Graz, Austria. ¹⁴Victorian Wader Study group, 165 Dalgetty Road, Beaumaris, Melbourne, Victoria 3193, Australia. ¹⁵Department of Forest Sciences, University of Helsinki, PO Box 27, Helsinki FI-00014, Finland. ¹⁶Department of Biological and Environmental Sciences, University of Jyväskylä, PO Box 35, Jyväskylä FI-40014, Finland. ¹⁷Department of Biological Sciences, Simon Fraser University, 8888 University Drive, Burnaby, British Columbia V5A 1S6, Canada. ¹⁸Alaska Region, US National Park Service, 240 W 5th Ave, Anchorage, Alaska 99501, USA. ¹⁹State Lab for Photon Energetics, Bauman Moscow State Technical University, 2nd Baumanskaya St, 5-1, Moscow 105005, Russia. ²⁰Biology Department, Trent University, 2140 East Bank Drive, Peterborough, Ontario K9L 0G2, Canada. ²¹Department of Fish and Wildlife Conservation, Virginia Polytechnic Institute and State University, 310 West Campus Drive, Blacksburg, Virginia 24061, USA. ²²Center for Conservation Biology, College of William & Mary and Virginia Commonwealth University, PO Box 8795, Williamsburg, Virginia 23187, USA. ²³Pacifica Ecological Services, 17520 Snow Crest Lane, Anchorage, Alaska, 99516, USA. ²⁴Migratory Bird Management, US Fish and Wildlife Service, 1011 East Tudor Road, Anchorage, Alaska 99503, USA. ²⁵Shorebird Recovery Program, Manomet, PO Box 545, Saxtons River, Vermont 05154, USA. ²⁶Faculty of Science, Charles University in Prague, Albertov 6, Praha 128 43, Czech Republic. ²⁷Department of Wildlife Diseases, Leibniz Institute for Zoo- and Wildlife Research, Alfred-Kowalke-Straße 17, Berlin 10315, Germany. ²⁸Biodiversity Lab, Department of Biology and Biochemistry, University of Bath, Claverton Down, Bath BA1 7AY, UK. ²⁹Centre for Evolutionary Biology, School of Biology, University of Western Australia, Stirling Highway, Crawley, Western Australia 6009, Australia. ³⁰Département de biologie, chimie et géographie and Centre d'études nordiques (CEN), Université du Québec à Rimouski, 300 allée des Ursulines, Rimouski, Quebec G5L 3A1, Canada. ³¹Canadian Wildlife Service, Environment and Climate Change Canada, PO Box 2310, 5019—52nd Street, 4th Floor, Yellowknife, Northwest Territories X1A 2P7, Canada. ³²Conservation Ecology Group, Groningen Institute for Evolutionary Life Sciences, University of Groningen, Nijenborgh 7, Groningen 9747 AG, The Netherlands. ³³Division of Life Sciences, Rutgers University, 604-Allison Road, Piscataway, New Jersey 08854-8082, USA. ³⁴Audubon Society of Portland, 5151 NW Cornell Road, Portland, Oregon 97210, USA. ³⁵Queensland Wader Study Group, 22 Parker Street, Brisbane, Queensland 4128, Australia. ³⁶Department of Wetland Ecology, Doñana Biological Station (CSIC), Av. Américo Vespucio, s/n, Seville 41092, Spain. ³⁷Centre for Environmental and Marine Studies (CESAM), Department of Biology, University of Aveiro, Campus de Santiago, Aveiro 3810-193, Portugal. ³⁸South Iceland Research Centre, University of Iceland, Fjölheimar, Selfoss 800, Iceland. ³⁹LJ Niles Associates, PO Box 784, Cape May, New Jersey 08204, USA. ⁴⁰Department of Zoology and Laboratory of Ornithology, Palacký University, 17. Listopadu 50, Olomouc 771 46, Czech Republic. ⁴¹Department of Ecology, University of Oulu, PO Box 3000, Oulu 90014, Finland. ⁴²Australasian Wader Studies Group, 1/19 Baldwin Road, Blackburn, Melbourne, Victoria 3130, Australia. ⁴³Institute of Avian Research, Vogelwarte Helgoland, An der Vogelwarte 21, Wilhelmshaven D-26386, Germany. ⁴⁴LJ Niles Associates, 109 Market Lane, Greenwich, Connecticut 08323, USA. ⁴⁵Environmental and Life Sciences, Trent University, 1600 West Bank Dr, Peterborough, Ontario K0L 0G2, Canada. ⁴⁶Bilingual Biology Program, York University Glendon Campus, 2275 Bayview Avenue, Toronto, Ontario M4N 3M6, Canada. ⁴⁷Centre for Integrative Ecology, Deakin University, 75 Picnic Road, Warrn Ponds, Geelong, Victoria 3216, Australia. ⁴⁸Canada Research in Northern Biodiversity and Centre d'Études Nordiques, Université du Québec à Rimouski, 300, Allée des Ursulines, Rimouski, Quebec G5L 3A8, Canada. ⁴⁹Canada Research in Polar and Boreal Ecology and Centre d'Études Nordiques, Université de Moncton, 18 avenue Antonine-Maillet, Moncton, New Brunswick E4K 1A6, Canada. ⁵⁰Faculty of Environmental Sciences, Czech University of Life Sciences Prague, Kamýcká 1176, Suchbát, Prague 16521, Czech Republic. ⁵¹Department of Biology and Wildlife, University of Alaska Fairbanks, PO Box 756100, Fairbanks, Alaska 99775-6100, USA. ⁵²Alaska Coastal Rainforest Center, University of Alaska Southeast, 11120 Glacier Hwy, Juneau, Alaska 99801, USA. ⁵³Cornell Lab of Ornithology, 159 Sapsucker Woods Road, Ithaca 14850, USA. ⁵⁴Equipe Ecologie Evolution, UMR 6282 Biogéosciences, Université de Bourgogne Franche Comté, 6 Bd Gabriel, Dijon 21000, France. ⁵⁵Groupe de Recherche en Ecologie Arctique, 16 Rue de Vernot, Francheville 21440, France. ⁵⁶Evolutionary Ecology Group, Hungarian Department of Biology and Ecology, Babeş-Bolyai University, Clinicilor 5-7, Cluj-Napoca RO-400006, Romania. ⁵⁷Department of Ecology, Montana State University, Bozeman, Montana 59717, USA. ⁵⁸Wildlife Research Division, Environment and Climate Change Canada, 1125 Colonel By Dr, Ottawa, Ontario K1A 0H3, Canada. ⁵⁹Zoological Museum, Lomonosov Moscow State University, Bolshaya Nikitskaya St, 6, Moscow 125009, Russia. ⁶⁰Institute of Agriculture & Environment, Massey University, Private Bag 11 222, Palmerston North 4442, New Zealand. ⁶¹Arctic Beringia Program, Wildlife Conservation Society, 925 Schloesser Dr, Fairbanks, Alaska 99709, USA. ⁶²Delaware Bay Shorebird Project, Ambler, Pennsylvania 19002, USA. ⁶³Arctic National Wildlife Refuge, US Fish and Wildlife Service, 101 12th Ave, Fairbanks, Alaska 99701, USA. ⁶⁴Fieldday Consulting, Surrey, British Columbia V4N 6M5, Canada. ⁶⁵Milner Centre for Evolution, Department of Biology and Biochemistry, University of Bath, Claverton Down, Bath BA2 7AY, UK. ⁶⁶Servei de Vigilància i Control de Plagues Urbanes, Agència de Salut Pública de Barcelona, Av. Príncep d'Astúries 63, Barcelona 8012, Spain. ⁶⁷NIOZ Royal Netherlands Institute for Sea Research, Department of Coastal Systems and Utrecht University, PO Box 59, Den Burg 1790 AB, Texel, The Netherlands. ⁶⁸Migratory Bird and Habitat Program, US Fish and Wildlife Service, 911 NE 11th Avenue, Portland, Oregon 97232, USA. ⁶⁹Poelweg 12, Westerland 1778 KB, The Netherlands.

METHODS

Recording incubation. Incubation data were obtained between 1994 and 2015, for as many shorebird species ($n = 32$) and populations ($n = 91$) as possible (that is, no statistical methods were used to predetermine sample size), using six methods (for specifications of the equipment see Extended Data Table 1). (1) In 261 nests, a radio frequency identification reader (RFID) registered the presence of tagged parents at the nest. The passive integrated tag was either embedded in a plastic flag^{31,32}, with which the parents were banded, or glued to the tail feathers³³. In 200 nests the RFID was combined with a temperature probe placed between the eggs. The temperature recordings allowed us to identify whether a bird was incubating even in the absence of RFID readings; an abrupt change in temperature marked the start or end of incubation³¹. (2) For 396 nests, light-loggers were mounted to the plastic flag or a band that was attached to the bird's leg^{34,35}. The logger recorded maximum light intensity (absolute or relative) for a fixed sampling interval (2–10 min). An abrupt change in light intensity (as opposed to a gradual change caused, for example, by twilight) followed by a period of low or high light intensity marked the start or end of the incubation period (Extended Data Fig. 2). (3) For nine nests a GPS tag, mounted on the back of the bird, recorded the position of the bird³⁶. The precision of the position depends on cloud cover and sampling interval³⁶. Hence, to account for the imprecision in GPS positions, we assumed incubation whenever the bird was within 25 m of the nest (Extended Data Fig. 2b). (4) At three nests automated receivers recorded signal strength of a radio tag attached to the rump of a bird; whenever a bird incubated, the strength of the signal remained constant²⁴ (supplementary actograms; pages 257–259 of ref. 16). (5) At 53 nests video cameras were used to identify the incubating parents. (6) Eight nests were continuously observed. In (5) and (6) parent identification was based on plumage, colour rings or radio tag. In one of the populations, three different methods were used, in seven populations representing seven species two methods were used. In one nest, two methods were used simultaneously (Extended Data Fig. 2b).

Extraction of incubation bouts. An incubation bout was defined as the total time allocated to a single parent (that is, the time between the arrival of a parent at and its departure from the nest followed by incubation of its partner). Bout lengths were only extracted if at least 24 h of continuous recording was available for a nest; in such cases, all bout lengths were extracted. For each nest, we transformed the incubation records to local time as UTC time + (longitude of the nest/15). Incubation bouts from RFIDs, videos and continuous observations were mostly extracted by an R script and the results verified by visualizing the extracted and the raw data^{16,31,37,38}; otherwise, M.B. extracted the bouts manually from plots of raw data^{39,40} (plots of raw data and extracted bouts for all nests are in the supplementary actograms of ref. 16; the actograms were generated by the ggplot and xyplot functions from the ggplot2 and lattice R-packages^{41–43}). Whenever the start or end of a bout was unclear, we classified these bouts as uncertain (see next paragraph for treatment of uncertain bouts). In case of light-logger data, the light recordings before and after the breeding period, when the birds were definitely not incubating, helped to distinguish incubation from non-incubation. Whenever an individual tagged with a light-logger nested in an environment where the sun was more than 6° below the horizon for part of a day (that is, night), we assumed an incubation bout when the individual started incubating before the night started and ended incubating after the night ended. When different individuals incubated at the beginning versus at the end of the night, we either did not quantify these bouts or we indicated the possible time of exchange (based on trends in previous exchanges), but classified these bouts as uncertain (see supplementary actograms¹⁶). In total, we extracted 34,225 incubation bouts.

The proportion of uncertain bouts within nests had a distribution skewed towards zero (median = 0%, range, 0–100%, $n = 729$ nests), and so did the median proportion of uncertain bouts within populations (median = 2%, range, 0–74%, $n = 91$ populations). Excluding the uncertain bouts did not change our estimates of median bout length (Pearson's correlation coefficient for median bout length based on all bouts and without uncertain bouts: $r = 0.96$, $n = 335$ nests with both certain and uncertain bouts). Hence, in further analyses all bouts were used to estimate median bout length.

Note that in some species sexes consistently differed in bout length (Fig. 1b, for example, *Vanellus vanellus*). As these differences are small compared to the between-species differences and because in 27 nests (of 8 species) the sex of the parents was unknown, we used median bout length independent of sex in this study.

Extraction of period length. The method used for extracting the period length of incubation rhythm for each nest is described in the Extended Data Fig. 1.

Extraction of entrainable periods. We classified 24-h periods and periods with 24-h harmonics (that is, 3, 6, 12, 48 h) as strictly entrainable by 24-h light fluctuations ($n = 142$ nests out of 584). Including nearest adjacent periods (± 0.25 h) increased the number of nests with entrainable periods ($n = 277$), but results of statistical analyses remained quantitatively similar. We consider periods and

harmonics of 12.42 h (that is, 3.1, 6.21, 12.42, 24.84 h) as strictly entrainable by tide. However, because the periods in our data were extracted in 0.25-h intervals (Extended Data Fig. 1), we classified periods of 3, 6.25, 12.5, 24.75 h (that is, those closest to the strict tide harmonics) as entrainable by tide ($n = 32$ nests out of 584). Including also the second nearest periods (that is, 3.25, 6, 12.25, 25) increased the number of nests entrainable by tide to $n = 55$.

Population or species life-history traits. For 643 nests, the exact breeding location was known (nests or individuals were monitored at the breeding area). For the remaining 86 nests (from 27 populations representing 8 species, where individuals were tagged with light-loggers at the wintering area), the breeding location was roughly estimated from the recorded 24-h variation in daylight, estimated migration tracks, and the known breeding range of the species^{44–51}. One exact breeding location was in the Southern Hemisphere, so we used absolute latitude in analyses. Analyses without populations with estimated breeding-location or without the Southern Hemisphere population generated quantitatively similar estimates as the analyses on full data.

For each population, body size was defined as mean female wing length⁵², either for individuals measured at the breeding area or at the wintering area. In case no individuals were measured, we used the mean value from the literature (see open access data for specific values and references⁵³).

Anti-predation strategy was assessed by estimating the escape distance of the incubating bird when a human approached the nest, because species that are cryptic typically stay on the nest much longer than non-cryptic species, sometimes until nearly stepped upon^{48,54}. Escape distance was obtained for all species. Forty-four authors of this paper estimated the distance (in metres) for one or more species based on their own data or experience. For ten species, we also obtained estimates from the literature⁴⁸. We then used the median 'estimated escape distance' for each species. In addition, for 13 species we obtained 'true escape distance'. Here, the researcher approached a nest (of known position) and either estimated his distance to the nest or marked his position with GPS when the incubating individual left the nest. For each GPS position, we calculated the Euclidian distance from the nest. In this way we obtained multiple observations per nest and species, and we used the median value per species (weighted by the number of estimates per nest) as the true escape distance. The species' median estimated escape distance was a good predictor of the true escape distance (Pearson's correlation coefficient: $r = 0.89$, $n = 13$ species). For analysis, we defined the escape distance of a species as the median of all available estimates.

For each species, we determined whether it predominantly uses a tidal environment outside its breeding ground, that is, has tidal versus non-tidal life history (based on refs 48, 50, 51). For each population with exact breeding location, we scored whether tidal foraging habitats were used by breeding birds for foraging (for three populations this information was unknown)⁵³. For all populations with estimated breeding location we assumed, based on the estimated location and known behaviour at the breeding grounds, no use of tidal habitat.

Statistical analyses. Unless specified otherwise, all analyses were performed on the nest level using median bout length and extracted period length.

We used phylogenetically informed comparative analyses to assess how evolutionary history constrains the incubation rhythms (estimated by Pagel's λ coefficient of phylogenetic signal^{55,56}) and to control for potential non-independence among species due to common ancestry. This method explicitly models how the covariance between species declines as they become more distantly related^{55,57,58}. We used the Hackett⁵⁹ backbone phylogenetic trees available at <http://birdtree.org> (ref. 60), which included all but one species (*Charadrius nivosus*) from our dataset. Following a subsequent taxonomic split⁶¹, we added *C. nivosus* to these trees as a sister taxon of *C. alexandrinus*. Phylogenetic uncertainty was accounted for by fitting each model with 100 phylogenetic trees randomly sampled from 10,000 phylogenies at <http://birdtree.org> (ref. 60).

The analyses were performed with Bayesian phylogenetic mixed-effect models (Fig. 4 and Extended Data Tables 2, 4) and the models were run with the MCMCglmm function from the R package MCMCglmm⁶². In all models, we also accounted for multiple sampling within species and breeding site (included as random effects). In models with a Gaussian response variable, an inverse-gamma prior with shape and scale equal to 0.001 was used for the residual variance (that is, variance set to 1 and the degree of belief parameter to 0.002). In models with binary response variables, the residual variance was fixed to 1. For all other variance components the parameter-expanded priors were used to give scaled F -distributions with numerator and denominator degrees of freedom set to 1 and a scale parameter of 1,000. Model outcomes were insensitive to prior parameterization. The MCMC chains ran for 2,753,000 iterations with a burn-in of 3,000 and a thinning interval of 2,500. Each model generated approximately 1,100 independent samples of model parameters (Extended Data Tables 2, 4). Independence of samples in the Markov chain was assessed by tests for autocorrelation between samples and by using graphic diagnostics.

First, we used MCMCglmm to estimate Pagel's λ (phylogenetic signal) for bout and period length (Gaussian), and to show that our estimates of these two incubation variables were independent of how often the incubation behaviour was sampled ('sampling' in min, ln-transformed; Extended Data Table 2). Hence, in subsequent models, sampling was not included.

Then, we used MCMCglmm to model variation in bout length and period length (Extended Data Table 4). Bout length was modelled as a continuous response variable and latitude (in degrees, absolute), female wing length (mm, ln-transformed) and approach distance (m, ln-transformed) as continuous predictors. Predictors had low collinearity (at nest, population and species level; all Pearson or Spearman correlation coefficients $|r| < 0.28$). To test for potential entrainment to 24-h, period length was modelled as a binary response variable (1 = rhythms with period of 3, 6, 12, 24, or 48 h; 0 = rhythms with other periods) and latitude as a continuous predictor. To test how circadian period varies with latitude or life history, the period was transformed to deviations from 24 h and 24-h harmonics and scaled by the time span between the closest harmonic and the closest midpoint between two harmonics. For example, a 42-h period deviates by -6 h from 48 h (the closest 24-h harmonic) and hence -6 h was divided by 12 h (the time between 36 h—the midpoint of two harmonics—and 48 h—the closest harmonic). This way the deviations spanned from -1 to 1 with 0 representing 24 h and its harmonics. The absolute deviations were then modelled as a continuous response variable and latitude as continuous predictor. The deviations were also modelled as a continuous response and species life history (tidal or not) as categorical predictor.

In all models the continuous predictor variables were centred and standardized to a mean of zero and a standard deviation of one.

We report model estimates for fixed and random effects, as well as for Pagel's λ , by the modes and the uncertainty of the estimates by the highest posterior density intervals (referred to as 95% CI) from the joint posterior distributions of all samples from the 100 separate runs, each with 1 of the 100 separate phylogenetic trees from <http://birdtree.org> (ref. 60).

To help interpret the investigated relationships we assessed whether incubation rhythms evolved within diverged groups of species by plotting the evolutionary tree of the incubation rhythm variables (Fig. 2c), as well as of the predictors (Extended Data Fig. 6).

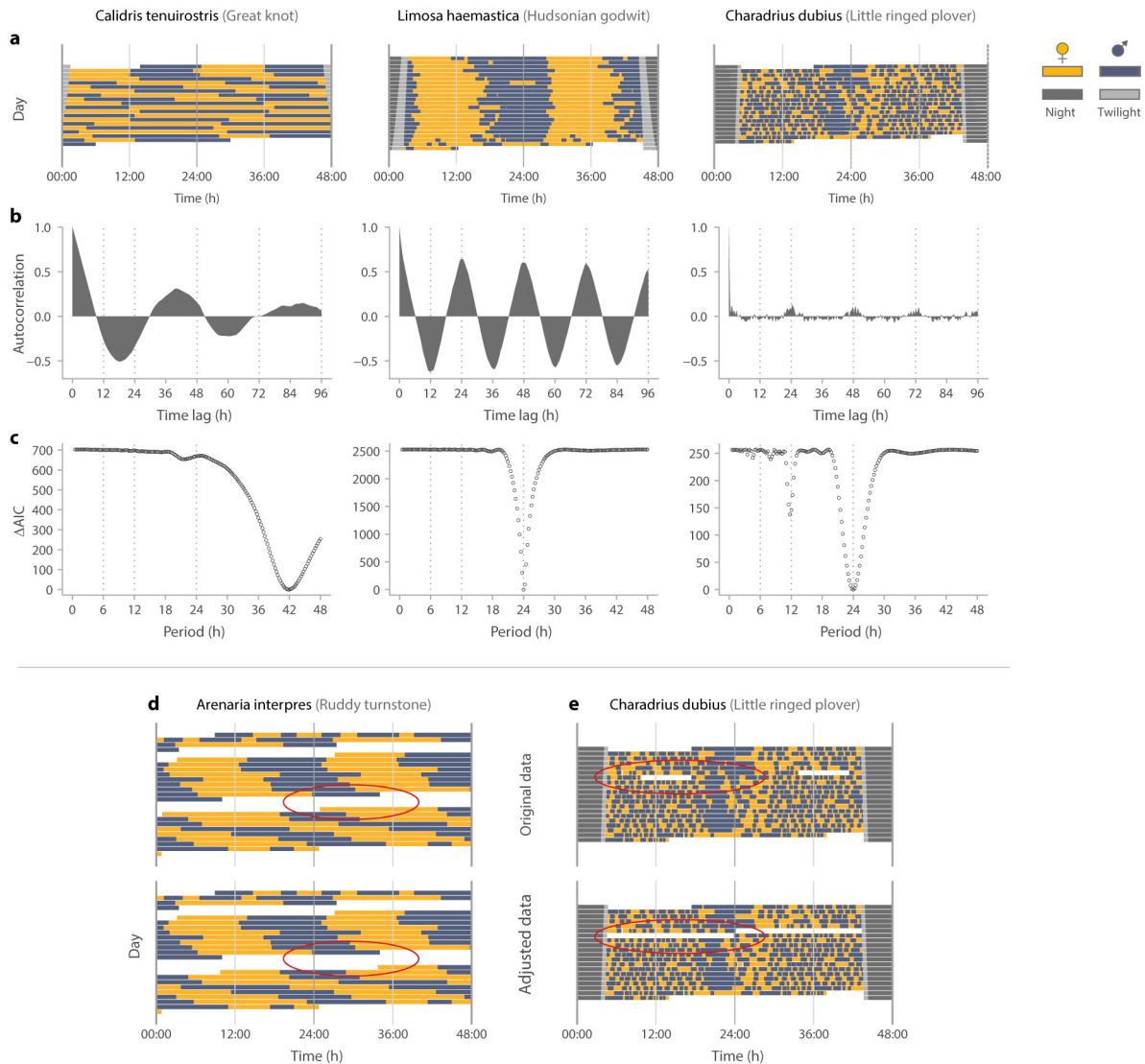
The source of phylogenetic constraint in bout and period length was investigated by estimating the proportion of phenotypic variance explained by suborder, genus and species (Extended Data Table 3). The respective mixed models were also specified with MCMCglmm⁶² using the same specifications as in the phylogenetic models. Because suborder contained only two levels, we first fitted an intercept mixed model with genus, species, and breeding site as random factors, and used it to estimate the overall phenotypic variance. We then entered suborder as a fixed factor and estimated the variance explained by suborder as the difference between the total variance from the first and the second model. To evaluate the proportion of the variance explained by species, genus and breeding site, we used the estimates from the model that included suborder.

R version 3.1.1 (ref. 63) was used for all statistical analyses.

Code availability. All statistical analyses, figures, and the supplementary actograms are replicable with the open access information, including computer software and code for R, available at the Open Science Framework, <https://osf.io/wxufm/> (ref. 16).

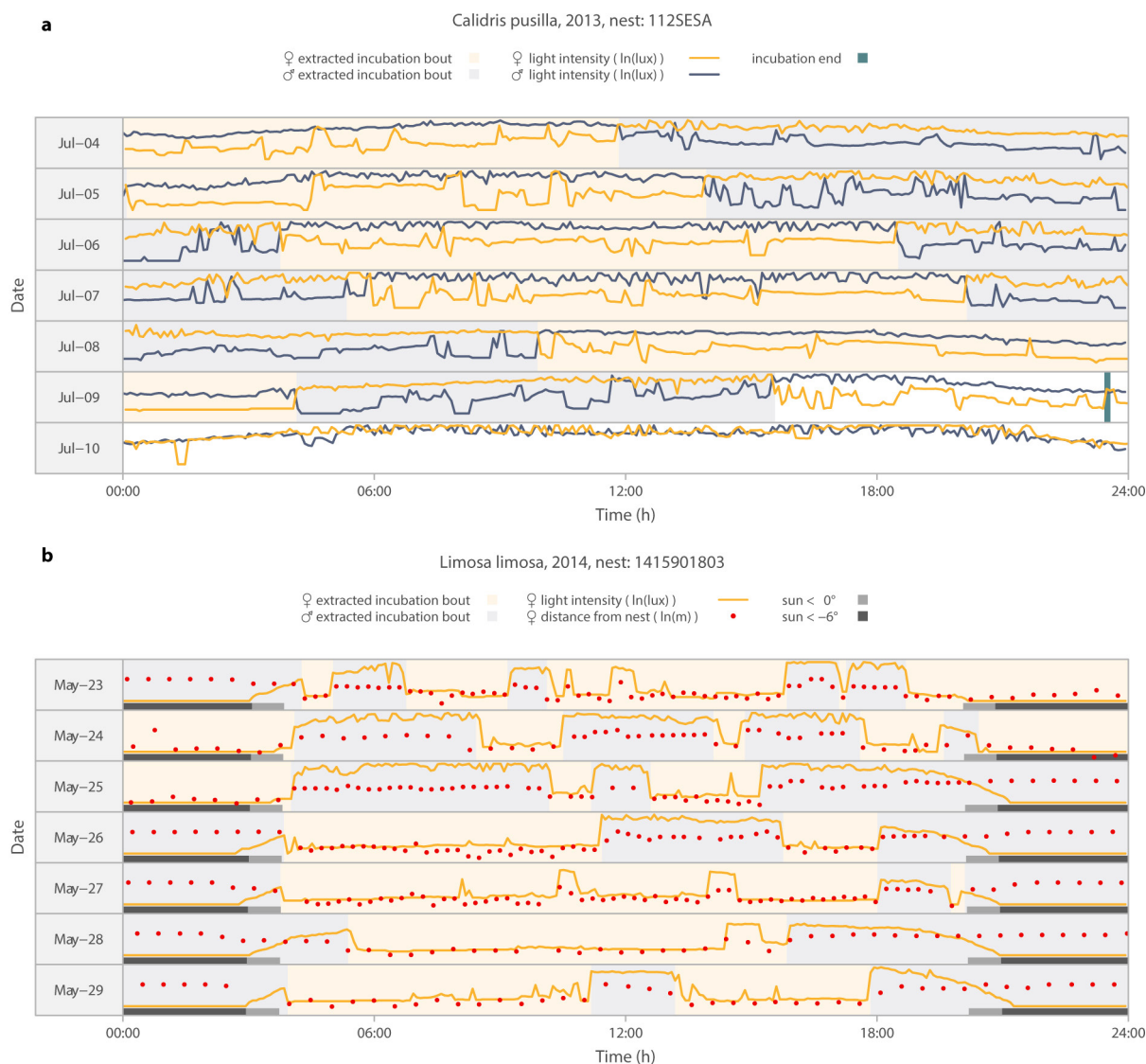
Data availability. Primary and extracted data that support the findings of this study are freely available from the Open Science Framework, <https://osf.io/wxufm/> (ref. 16). Source data for Figs 1–4 are provided with the paper.

31. Bulla, M., Valcu, M., Rutten, A. L. & Kempenaers, B. Biparental incubation patterns in a high-Arctic breeding shorebird: how do pairs divide their duties? *Behav. Ecol.* **25**, 152–164 (2014).
32. Reneerkens, J., Grond, K., Schekkerman, H., Tulp, I. & Piersma, T. Do uniparental sanderlings *Calidris alba* increase egg heat input to compensate for low nest attentiveness? *PLoS One* **6**, e16834 (2011).
33. Kosztolányi, A. & Székely, T. Using a transponder system to monitor incubation routines of Snowy Plovers. *J. Field Ornithol.* **73**, 199–205 (2002).
34. Conklin, J. R. & Battley, P. F. Attachment of geolocators to bar-tailed godwits: a tibia-mounted method with no survival effects or loss of units. *Wader Study Group Bull.* **117**, 56–58 (2010).
35. Burger, J., Niles, L. J., Porter, R. R. & Dey, A. D. Using geolocator data to reveal incubation periods and breeding biology in Red Knots *Calidris canutus rufa*. *Wader Study Group Bull.* **119**, 26–36 (2012).
36. Bouten, W., Baaij, E. W., Shamoun-Baranes, J. & Camphuysen, K. C. J. A flexible GPS tracking system for studying bird behaviour at multiple scales. *J. Ornithol.* **154**, 571–580 (2012).
37. Bulla, M. R-SCRIPT and EXAMPLE DATA to extract incubation from temperature measurements. Version 1. *figshare* <https://dx.doi.org/10.6084/m9.figshare.1037545.v1> (2014).
38. Bulla, M. R-SCRIPT and EXAMPLE DATA to extract incubation bouts from continuous RFID and video data. Version 1. *figshare* <https://dx.doi.org/10.6084/m9.figshare.1533278.v1> (2015).
39. Bulla, M. Example of how to manually extract incubation bouts from interactive plots of raw data—R-CODE and DATA. Version 1. *figshare* <https://dx.doi.org/10.6084/m9.figshare.2066784.v1> (2016).
40. Bulla, M. Procedure for manual extraction of incubation bouts from plots of raw data.pdf. Version 1. *figshare* <https://dx.doi.org/10.6084/m9.figshare.2066709.v1> (2016).
41. Wickham, H. *ggplot2: Elegant Graphics for Data Analysis* (Springer 2009).
42. Sarkar, D. & Andrews, F. latticeExtra: Extra Graphical Utilities Based on Lattice. R package version 0.6-24 <http://CRAN.R-project.org/package=latticeExtra> (2012).
43. Sarkar, D. *Lattice: Multivariate Data Visualization with R* (Springer, 2008).
44. Lisovski, S. Geolocator-ArcticWader-BreedingSiteEstimation. Version 2015-08-05. *GitHub repository* <https://github.com/slisovski/Geolocator-ArcticWader-BreedingSiteEstimation> (2015).
45. Lisovski, S. & Hahn, S. GeoLight—processing and analysing light-based geolocator data in R. *Methods Ecol. Evol.* **3**, 1055–1059 (2012).
46. Lisovski, S. et al. Geolocation by light: accuracy and precision affected by environmental factors. *Methods Ecol. Evol.* **3**, 603–612 (2012).
47. Conklin, J. R., Battley, P. F., Potter, M. A. & Fox, J. W. Breeding latitude drives individual schedules in a trans-hemispheric migrant bird. *Nat. Commun.* **1**, 67 (2010).
48. Poole, A. *The Birds of North America* (Cornell Laboratory of Ornithology, 2005).
49. Lappo, E., Tomkovich, P. & Syroechkovskiy, E. *Atlas of Breeding Waders in the Russian Arctic* (UF Ofsetnaya Pecha, 2012).
50. Chandler, R. J. *Shorebirds of the Northern Hemisphere* (Christopher Helm, 2009).
51. Brazil, M. *Birds of East Asia: Eastern China, Taiwan, Korea, Japan, and Eastern Russia* (Christopher Helm, 2009).
52. Dale, J. et al. Sexual selection explains Rensch's rule of allometry for sexual size dimorphism. *Proc. R. Soc. B* **274**, 2971–2979 (2007).
53. Bulla, M. et al. Supplementary Data 3—Study sites: location, population wing length, monitoring method, tide. Version 11. *figshare* <https://dx.doi.org/10.6084/m9.figshare.1536260.v11> (2016).
54. Cramp, S. *Handbook of the Birds of Europe, the Middle East, and North Africa: The Birds of the Western Palearctic Volume III: Waders to Gulls* (Oxford Univ. Press, 1990).
55. Freckleton, R. P., Harvey, P. H. & Pagel, M. Phylogenetic analysis and comparative data: a test and review of evidence. *Am. Nat.* **160**, 712–726 (2002).
56. Pagel, M. Inferring evolutionary processes from phylogenies. *Zool. Scr.* **26**, 331–348 (1997).
57. Martins, E. P. & Hansen, T. F. Phylogenies and the comparative method: a general approach to incorporating phylogenetic information into the analysis of interspecific data. *Am. Nat.* **149**, 646–667 (1997).
58. Pagel, M. Inferring the historical patterns of biological evolution. *Nature* **401**, 877–884 (1999).
59. Hackett, S. J. et al. A phylogenomic study of birds reveals their evolutionary history. *Science* **320**, 1763–1768 (2008).
60. Jetz, W., Thomas, G. H., Joy, J. B., Hartmann, K. & Mooers, A. O. The global diversity of birds in space and time. *Nature* **491**, 444–448 (2012).
61. Küpper, C. et al. Kentish versus snowy plover: phenotypic and genetic analyses of *Charadrius alexandrinus* reveal divergence of Eurasian and American subspecies. *Auk* **126**, 839–852 (2009).
62. Hadfield, J. D. MCMC methods for multi-response generalized linear mixed models: the MCMCglmm R package. *J. Stat. Softw.* **33**, 1–22 (2010).
63. R-Core-Team. R: A Language and Environment for Statistical Computing. Version 3.1.1. *R Foundation for Statistical Computing* <http://www.R-project.org/> (2014).
64. Anderson, D. R. *Model Based Inference in the Life Sciences: A Primer on Evidence* (Springer, 2008).
65. Hijmans, R. J. raster: Geographic data analysis and modeling. R package version 2.3-24. <http://CRAN.R-project.org/package=raster> (2015).
66. Bivand, R. & Lewin-Koh, N. maptools: Tools for reading and handling spatial objects. R package version 0.8-30. <http://CRAN.R-project.org/package=maptools> (2014).
67. Revell, L. J. in *Modern Phylogenetic Comparative Methods and Their Application in Evolutionary Biology* (ed. L. Z. Garamszegi) Ch. 4, 77–103 (Springer, 2014).
68. Johnson, O. W. et al. Tracking Pacific golden-plovers *Pluvialis fulva*: transoceanic migrations between non-breeding grounds in Kwajalein, Japan and Hawaii and breeding grounds in Alaska and Chukotka. *Wader Study* **122**, 13–20 (2015).
69. Kosztolányi, A., Cuthill, I. C. & Székely, T. Negotiation between parents over care: reversible compensation during incubation. *Behav. Ecol.* **20**, 446–452 (2009).
70. St Clair, J. J. H., Herrmann, P., Woods, R. W. & Székely, T. Female-biased incubation and strong diel sex-roles in the two-banded plover *Charadrius falklandicus*. *J. Ornithol.* **151**, 811–816 (2010).
71. Spiegel, C. S., Haig, S. M., Goldstein, M. I. & Huso, M. Factors affecting incubation patterns and sex roles of black oystercatchers in Alaska. *Condor* **114**, 123–134 (2012).
72. Praus, L. & Weidinger, K. Predators and nest success of sky larks *Alauda arvensis* in large arable fields in the Czech Republic. *Bird Study* **57**, 525–530 (2010).
73. Orme, D. et al. caper: Comparative Analyses of Phylogenetics and Evolution in R. R package version 0.5.2. <http://CRAN.R-project.org/package=caper> (2013).



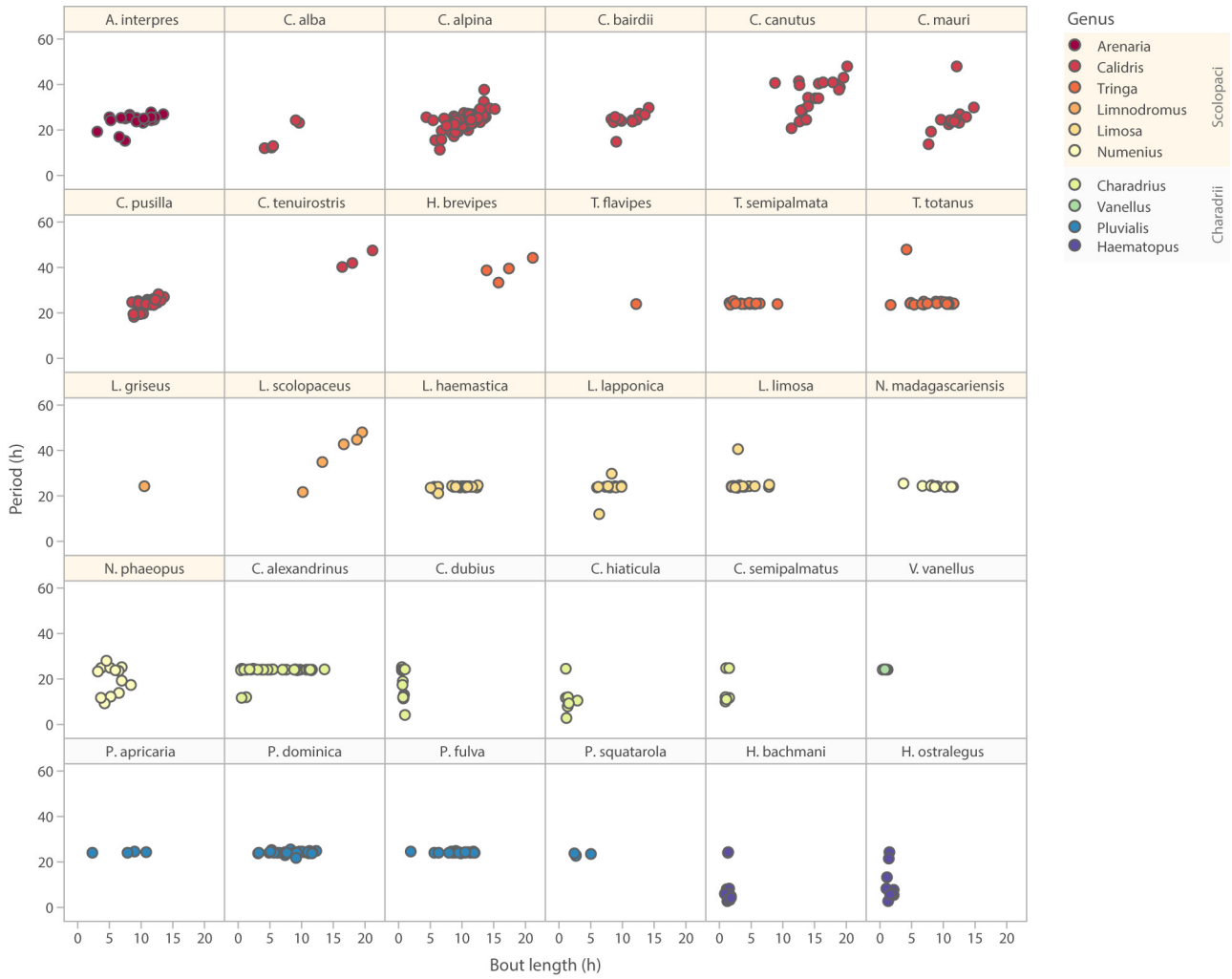
Extended Data Figure 1 | Extracting period length of incubation rhythms. **a–c,** Each column represents an example for a specific nest with long, intermediate and short incubation bouts. **a,** From the extracted bout lengths we created a time series that indicated—for each nest and for every 10 min interval—whether a specific parent (female, if sex was known) incubated or not. Exchange gaps (no parent on the nest) had to be <6 h to be included (for treatment of exchange gaps >6 h see **d, e**). **b,** We then estimated the autocorrelation for each 10-min time-lag up to 4 days (R ‘acf’ function⁶³). Positive values indicate a high probability that the female was incubating, negative values indicate that it was more likely that the male was incubating. We used only nests that had enough data to estimate the autocorrelation pattern ($n = 584$ nests from 88 populations of 30 species). The visualized autocorrelation time series never resembled white or random noise indicative of an arrhythmic incubation pattern. To determine the period (that is, cycle of high and low probability for a parent to incubate) that dominated the incubation rhythm, we fitted to the autocorrelation estimates a series of periodic logistic regressions. In each regression, the time lag (in hours) transformed to radians was represented by a sine and cosine function $f(t) = a_0 + b\left(\cos \frac{2\pi t}{T}\right) + c\left(\sin \frac{2\pi t}{T}\right) + e$, where $f(t)$ is the autocorrelation at time-lag t ; a_0 is the intercept; b is the

slope for sine and c the slope for cosine, T represents the length of the fitted period (in hours), and e is an error term. We allowed the period length to vary from 0.5 h to 48 h (in 15 min intervals, giving 191 regressions). **c,** By comparing the Akaike’s information criterion⁶⁴ (AIC) of all regressions, we estimated, for each nest, the length of the dominant period in the actual incubation data (best fit). Regressions with ΔAIC ($\text{AIC}_{\text{model}} - \text{AIC}_{\text{min}}$) close to 0 are considered as having strong empirical support, while models with ΔAIC values ranging from 4–7 have less support⁶⁴. In 73% of all nests, we determined a single best model with $\Delta\text{AIC} \leq 3$ (**c**, middle ΔAIC graph), in 20% of nests two best models emerged and in 6% of nests 3 or 4 models had $\Delta\text{AIC} \leq 3$ (**c**, left and right ΔAIC graphs). However, in all but three nests, the models with the second-, third- and so on best ΔAIC were those with period lengths closest to the period length of the best model (**c**, left and right ΔAIC graphs). This suggests that multiple periodicities are uncommon. **d, e,** The extraction of the period length (described in **a–c**) requires continuous data sets, but some nests had long (>6 h) gaps between two consecutive incubation bouts, for example because of equipment failure or because of unusual parental behaviour. In such cases, we excluded the data from the end of the last bout until the same time the following day, if data were then available again (**d**), or we excluded the entire day (**e**).

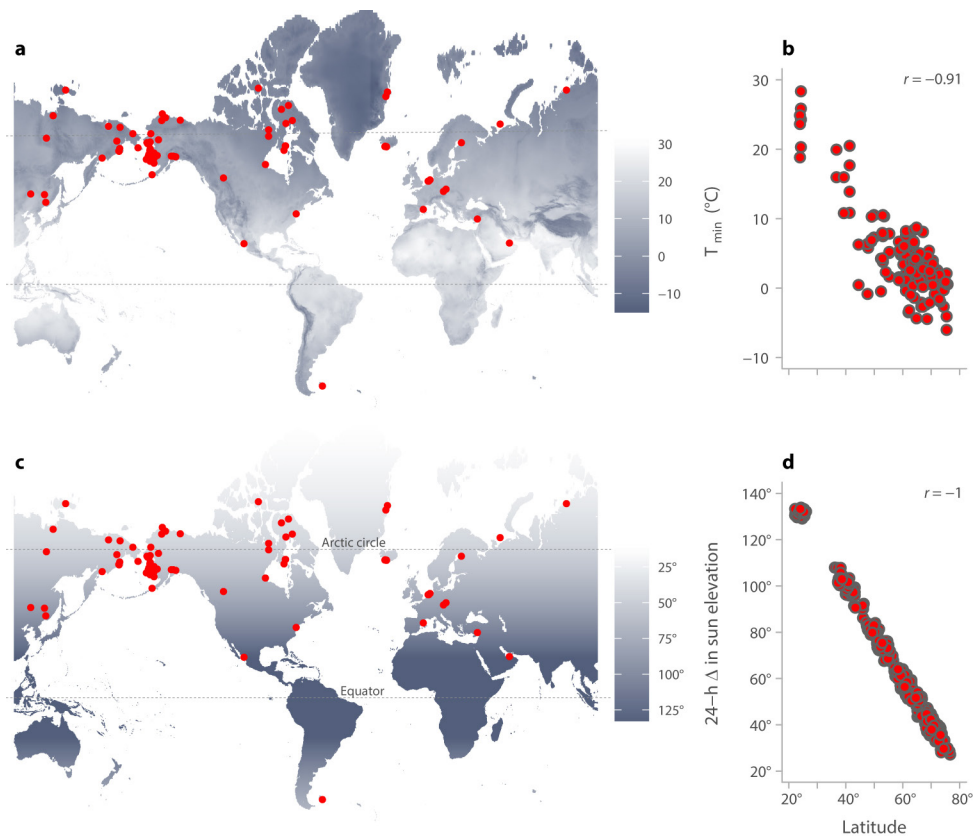


Extended Data Figure 2 | Extracting incubation bouts from light-logger data. **a**, An example of a nest with a light intensity signal from both parents (yellow line, female; blue line, male). The incubation bouts for a given parent reflect periods dominated by lower light values compared to those of the partner. Note the sharp drop in the light levels at the beginning of each incubation bout and the sharp increase in the light levels at the end. Change-overs between partners occur when the light signal lines cross. Such pronounced changes in light intensity detected by the logger were used to assign incubation even when only a single parent was tagged. Note that after the chicks hatch and leave the nest (9 July, vertical bar), the light intensity signals from both parents remain similar. **b**, An example

of a nest where one incubating parent was simultaneously equipped with a light-logger and with a GPS tag. The yellow line indicates light levels, red dots indicate the distance of the bird to the nest. As expected, low light levels co-occur with close proximity to the nest, and therefore reflect periods of incubation. Although light levels decrease during twilight (light grey horizontal bar), the recordings were still sensitive enough to reflect periods of incubation, that is, the light signal matches the distance (for example 25 May: female incubated during dawn, but was off the nest during dusk). **a**, **b**, Rectangles in the background indicate incubation bouts (female, light yellow polygon; male, light blue polygon).

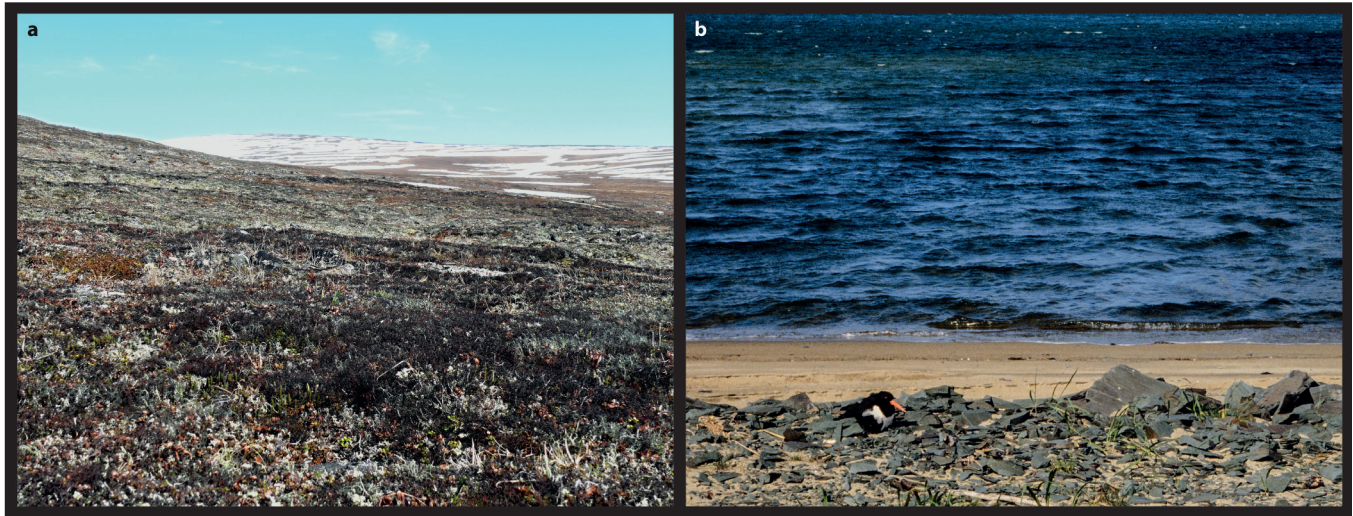


Extended Data Figure 3 | Relationship between bout and period length for 30 shorebird species. Each dot represents one nest ($n = 584$ nests), colours indicate the genus.



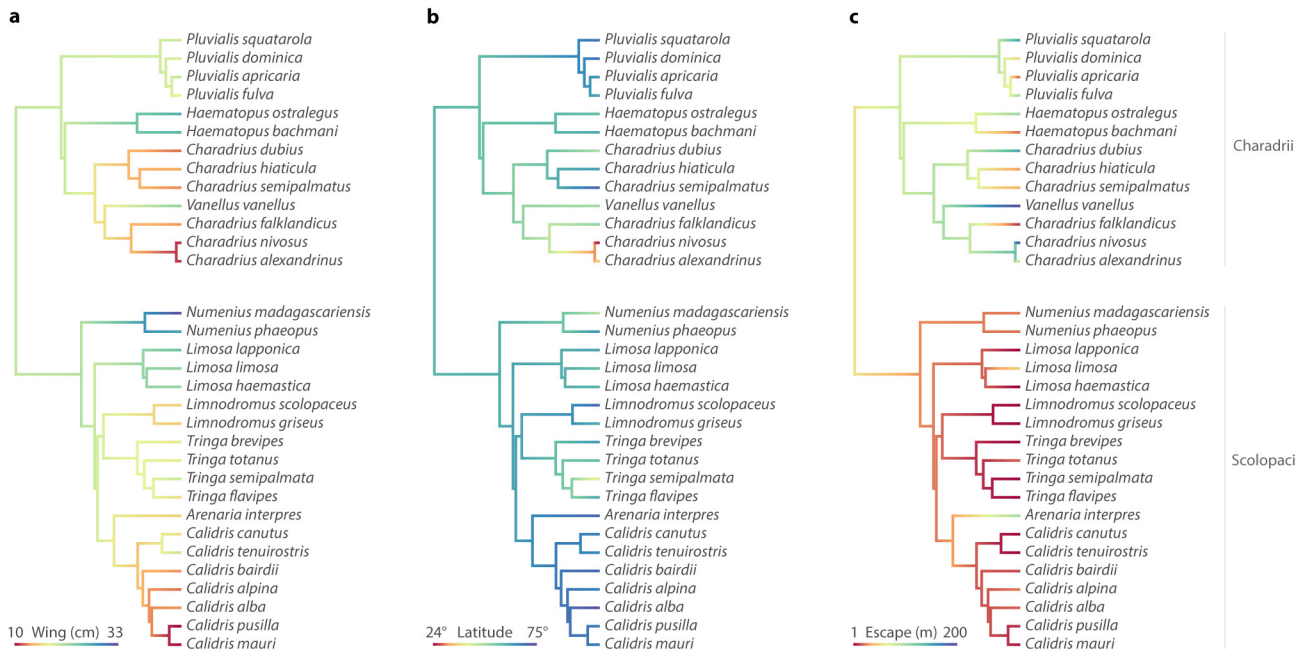
Extended Data Figure 4 | Ecological correlates of latitude. **a**, Variation in minimum temperature across the globe represented by mean minimum June temperature for the Northern Hemisphere and mean minimum December temperature for the Southern Hemisphere. **b**, Correlation between absolute latitude and the mean minimum temperature of the month ($n = 729$ nests). For each nest we used the month that contained most of the incubation data. For maximum temperature the correlation was the same ($r = -0.91$, $n = 729$ nests). **c**, Daily variation in sun elevation (that is, in light conditions) are represented as the difference between the

noon and midnight sun elevation for the summer solstice in the Northern Hemisphere and the winter solstice in the Southern Hemisphere. **d**, Correlation between absolute latitude and daily variation in sun elevation for mid-day of incubation data for each nest ($n = 729$ nests). The points are jittered, as otherwise they form a straight line. **a**, **c**, Red points indicate the breeding site for each population ($n = 91$). **a**, **b**, The minimum and maximum monthly temperature data were obtained from <http://www.worldclim.org> using the raster R-package⁶⁵. **c**, **d**, Sun-elevation was obtained by the 'solarpos' function from the maptools R-package⁶⁶.



Extended Data Figure 5 | Between-species variation in parental crypsis during incubation. **a, b**, Shorebirds vary in how visible they are on the nest while incubating. The nearly invisible great knot (*Calidris tenuirostris*; **a**; central and facing right) sits tight on the nest when approached by a

human until nearly stepped upon. In contrast, the conspicuous Eurasian oystercatcher (*Haematopus ostralegus*; **b**) is visible on the nest from afar and when approached by a human leaves the nest about 100 m in advance (Credits: **a**, M. Šálek; **b**, J. van de Kam).



Extended Data Figure 6 | Phylogenetic relationships for predictors. **a**, Body size, estimated as female wing length. **b**, Latitude (absolute). **c**, Escape distance. **a–c**, We visualized the evolution of these traits^{29,67} using the median (**a**, **b**; based on population medians), estimates of escape distance for each species (**c**) and one of the 100 sampled trees (see Methods).

Extended Data Table 1 | Incubation monitoring methods and systems

Method	Model	Company	www	Year	Sampling interval (min)	<i>n</i> populations	<i>n</i> nests	<i>n</i> both parents tagged
RFID + tag embedded in the flag ^{31,32}	tag: 9.0 × 2.1 mm, 0.087 g, 134.2 kHz	Biomark	http://www.biomark.com/	2011-2014	0.08	19	200	157
	RFID: custom made	Calima Engineering, & Max Planck Institute for Ornithology	http://www.calima.de http://www.orn.mpg.de/en					
	temperature probe: TinyTag Talk PB-5005-0M6 (ø 2.5 mm) with Talk 2 logger TK-4023 or MSR® (12 × 6 mm) with MSR® 145 logger	Gemini Data Loggers Ltd	www.tinytag.info					
	MSR® (12 × 6 mm) with MSR® 145 logger	MSR® Electronics GmbH	http://www.msr.ch/					
RFID + tag glued to the tail ³³	tag: 11.5 × 2.12 mm, 0.1 g, 125 kHz	Trovan®	http://www.trovan.com	2007	5	1	3	3
	RFID: custom made	EID Aalten BV	http://www.dorset.nu/en/					
	temperature probe: TinyTag Talk PB-5005-0M6 (ø 2.5 mm) with Talk 2 logger TK-4023	Gemini Data Loggers Ltd	www.tinytag.info					
	tag: 11.5 × 2.12 mm, 0.09g, 128 kHz	Trovan®	http://www.trovan.com	2005-2008	1.7-5.5	1	34	34
Light logger ^{34,35,68}	RFID: LID650 with extended memory, driver TM613, Antenna ANT614							
	tag: TIRIS 12 × 6 × 3 mm, 0.4 g, 134.2 kHz	Texas Instruments	http://www.ti.com	1997	1/3	1	6	6
	RFID: TIRIS Micro-reader							
	TIRIS tag: 12 × 6 × 3 mm, 0.4 g, 134.2 kHz	Texas Instruments	http://www.ti.com	2006	1/3	1	18	18
GPS-tracker ³⁶	RFID: custom made	Francis Scientific Instruments Limited	https://www.duedil.com/comp-any/01964877/francis-scientific-instruments-limited					
	UvA-BiTS 4C: 62 × 30 × 12, 14 g	University of Amsterdam	http://www.uva-bits.nl/	2008-2013	2-10	48	261*	55
Radio-transmitter ²⁴	UvA-BiTS 2CDse: 52 × 22 × 9, 7.5 g			2012-2014	5-10	23	136*	11
	iTag: 26 × 15 × 9 mm, 4 g	e-obs GmbH	http://www.e-obs.de/	2009	0.07	2	3	3
Video ⁶⁹⁻⁷²				2005-2006	1/3	1	28	-
				2005-2011	constant	3	25	-
Observations				1994	30	1	5	-
				2011	constant	1	3	-

For details about methods used in each populations, see supplementary data of ref. 53.

*At one nest a bird with a MK logger was recaptured and the logger exchanged for an Intigeo logger. This nest appears in *n* for both logger types.

**Simultaneously equipped with light-logger (Intigeo). This nest appears in *n* for both GPS-tracker and Intigeo.

Extended Data Table 2 | Effects of phylogeny and sampling on bout length and period length

Response	Effect type	Effect	Posterior mode	95% CI		N (range)
				Lower	Upper	
Median bout [h]	Fixed	Intercept	7.2	1.04	12	1100 (924-2079)
		Sampling	0.16	-0.2	0.61	1100 (809-1644)
	Random (variance)	Phylogeny	25.33	4.6	59.6	1100 (753-1383)
		Species	0.01	0	12.1	1100 (779-1636)
		Breeding site	2.13	0.96	4.28	1100 (808-2242)
	Residual		5.04	4.51	5.61	1100 (838-1444)
		Page's λ	1	0.5	1	1100 (814-1316)
Period [h]	Fixed	Intercept	21.94	12.8	30.67	1100 (765-1392)
		Sampling	0.13	-0.41	0.65	1100 (741-1468)
	Random (variance)	Phylogeny	66.22	14.3	153	1100 (729-1638)
		Species	0.06	0	29.36	1100 (729-1435)
		Breeding site	0.01	0	0.88	1100 (814-1378)
	Residual		14.87	13.3	16.84	1100 (884-1460)
		Page's λ	1	0.54	1	1100 (740-1523)

The posterior estimates (modes) of the effect sizes with the highest posterior density intervals (95% CI) and the median and range of the effective sample sizes (N (range)) come from the joint posterior distribution of 100 separate runs each with 1 of 100 separate phylogenetic trees from <http://birdtree.org>. $n_{\text{bout}} = 729$ nests from 91 populations belonging to 32 species. $n_{\text{period}} = 584$ nests from 88 populations belonging to 30 species. Sampling (how often the incubation behaviour was sampled) was ln-transformed and then mean-centred and scaled (divided by s.d.). For procedures and specifications related to phylogenetic Bayesian mixed models see Methods. Estimating Page's λ on the species level ($n_{\text{bout}} = 32$ species, $n_{\text{period}} = 30$ species) with phylogenetic generalized least-squares using the function 'pqls' from the R package *caper*⁷³ gave similar results (median (range) $\lambda_{\text{bout}} = 0.73$ (0.63–1) and $\lambda_{\text{period}} = 0.95$ (0.64–1), based on 100 estimates each for 1 of the 100 trees).

Extended Data Table 3 | Source of phylogenetic signal

Suborder included	Response	Effect type	Fixed effects	Posterior mode	95% CI		N
					Lower	Upper	
No	Bout [h]	Fixed	Intercept	7.69	4.11	10.76	1100
			Random (variance)	Genus	9.54	0.02	46.6
		Random (variance)	Species	11	4.84	25.77	1100
			Breeding site	2.25	1.06	4.5	1100
			Residual	5.03	4.55	5.61	1100
Yes	Bout [h]	Fixed	Intercept (Charadrii)	4.48	1.05	7.66	1100
			Suborder (Scolopaci)	6.07	1.52	10.44	1100
		Random (variance)	Genus	0.09	0	21.35	1100
			Species	11.29	5.53	23.99	1275
			Breeding site	2.31	0.98	4.28	1100
			Residual	5.04	4.52	5.58	1100
No	Period [h]	Fixed	Intercept	23.46	18.22	27.39	1100
			Random (variance)	Genus	19.05	0	97.79
		Random (variance)	Species	41.02	17.04	72.66	1100
			Breeding site	0.01	0	0.9	1100
			Residual	14.94	13.35	16.76	1100
Yes	Period [h]	Fixed	Intercept (Charadrii)	18.61	13.12	23.98	940
			Suborder (Scolopaci)	8.92	0.6	15.4	990
		Random (variance)	Genus	0.33	0	59.09	769
			Species	34.41	16.91	68.14	1142
			Breeding site	0.01	0	0.84	1100
			Residual	15.01	13.34	16.86	891

The posterior estimates (modes) of the effect sizes with the highest posterior density intervals (95% CI) and the effective sample sizes (N) come from a posterior distribution of 1,100 simulated values generated by MCMCglmm in R⁶². $n_{\text{bout}} = 729$ nests from 91 populations belonging to 32 species. $n_{\text{period}} = 584$ nest from 88 populations belonging to 30 species.

Extended Data Table 4 | Effect of latitude, body size, escape distance and life history on biparental incubation rhythms in shorebirds

Response	Effect type	Fixed effects	Posterior mode	95% CI		N (range)
				Lower	Upper	
Bout [h]	Fixed	Intercept	7.45	2.65	12	1100 (804-1496)
		Wing length	-0.78	-2.5	1.05	1100 (839-1638)
		Latitude	1.72	0.63	2.65	1100 (850-1642)
		Escape distance	-1.68	-3.3	-0.25	1100 (634-2046)
	Random (variance)	Phylogeny	0.19	0	45	1100 (803-1875)
		Species	0.07	0	14.4	1100 (695-1580)
		Breeding site	1.4	0.59	3.02	1100 (833-1480)
		Residual	5.02	4.53	5.64	1100 (516-1916)
Page1's λ		0.72	0.13	1	1100 (731-1407)	
Light entrainable rhythm [1,0] on binomial scale	Fixed	Intercept	-1.62	-3.19	-0.13	1100 (731-1633)
		Latitude	-0.56	-1.15	-0.07	1100 (765-1575)
	Random (variance)	Phylogeny	0.05	0	5.54	1100 (883-1371)
		Species	0.02	0	2.68	1100 (965-2246)
		Breeding site	0	0	0.63	1100 (605-1304)
	Page1's λ		0.74	0.02	1	1100 (932-1498)
Absolute deviations from 24-h	Fixed	Intercept	0.17	-0	0.35	1100 (459-1501)
		Latitude	0.03	-0	0.07	1100 (777-1488)
	Random (variance)	Phylogeny	0	0	0.07	1100 (786-1393)
		Species	0	0	0.03	1100 (861-1412)
		Breeding site	0	0	0	1100 (826-1860)
	Residual	0.03	0.03	0.04	1100 (948-2039)	
Page1's λ		0.74	0.02	1	1100 (843-1471)	
Deviations from 24-h	Fixed	Intercept (non-tidal)	0.02	-0.04	0.09	1100 (851-1742)
		Life history (tidal)	-0.02	-0.1	0.04	1100 (702-2257)
	Random (variance)	Phylogeny	0	0	0.01	1100 (806-1692)
		Species	0	0	0	1100 (692-1601)
		Breeding site	0	0	0.01	1100 (656-1490)
	Residual	0.07	0.06	0.08	1100 (760-1563)	
Page1's λ		0.77	0.01	1	1100 (864-1451)	

The posterior estimates (modes) of the effect sizes with the highest posterior density intervals (95% CI) and the median and range of the effective sample sizes (N (range)) come from the joint posterior distribution of 100 separate runs each with 1 of the 100 separate phylogenetic trees from <http://birdtree.org>. $n_{\text{bout}} = 729$ nests from 91 populations belonging to 32 species. For models on light-entrainable rhythm, absolute deviations and deviations from 24 h: $n = 584$ nests from 88 populations belonging to 30 species. Latitude (in bout model: absolute value), wing length (ln-transformed), and escape distance (ln-transformed) were mean-centred and scaled (divided by s.d.). The estimates for the light-entrainable rhythm are on a binomial scale. For procedures and specifications related to phylogenetic Bayesian mixed models see Methods.